

NAERC Chassis Plans

These plans provide a complete set of drawings, materials lists and DWG files to assemble one replica chassis. Included is a complete hardware list of everything that will be needed to complete a rolling chassis.

Include with the plans is a fiberglass center tunnel which is an integral part of the structure. This is normally a \$500 value.

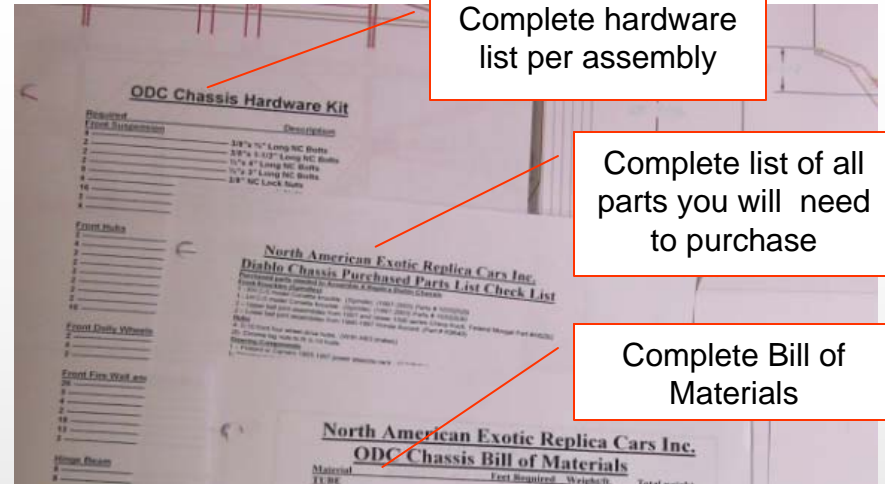
Buyer is responsible for shipping costs for the Tunnel. Approximately \$100 if shipped within the US



Only **\$1500** for complete set of plans to build one chassis!



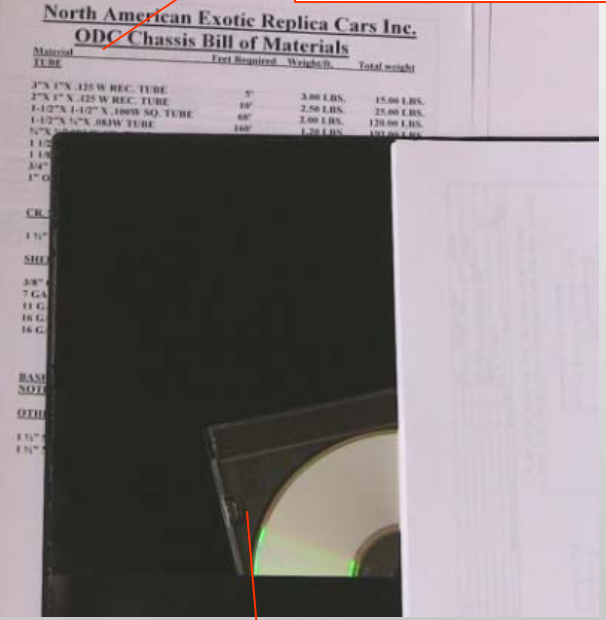
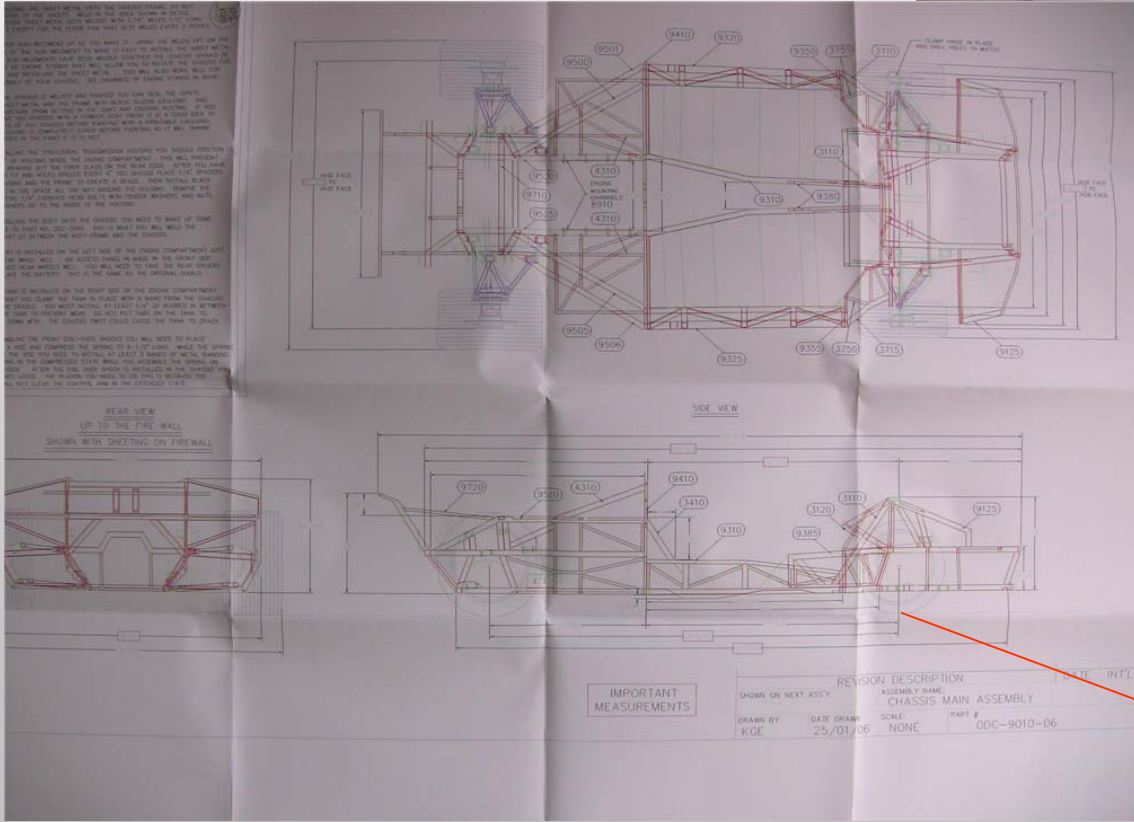
Center Tunnel



Complete hardware list per assembly

Complete list of all parts you will need to purchase

Complete Bill of Materials



CD with DWG files for all sheet metal parts

Complete 30" x 48" drawing overview

Detailed Manual



Manual includes a separate page with top, side and end view for every component in the assembly.

DWG files allow any fabrication facility to cut all the parts as needed for the metal components that are needed to complete the chassis.

For orders, email Dale@lambobuilder.com

