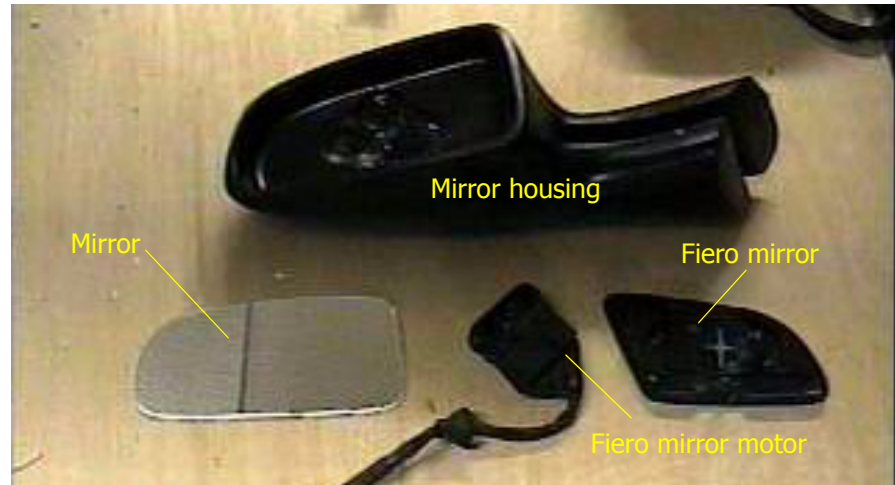


The kit comes with the mirror housings and mirrors that when used in conjunction with the original Fiero motors, you are able to adjust the mirrors from within the car.



## *Outside Mirrors*

The Fiero motors and Fiero Mirror need to be salvaged from the donor vehicle as they are not included with the kit.



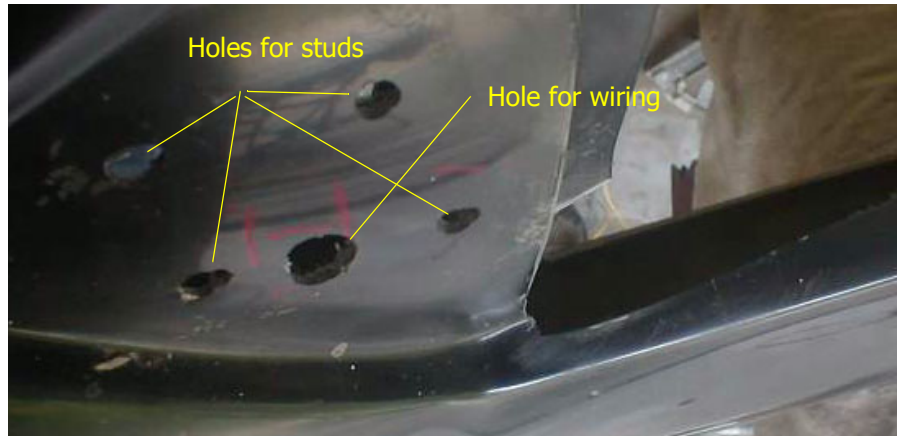
In order to secure the mirror housing to the body, you will need to secure studs in the housing that can be bolted to the body.



One technique that can be used is to cut a slot across the mounting point on the bottom of the mirror housing large enough to pass a large flat washer and 1/4" bolt through. These washer and bolt assembly will be epoxied into place. The slot can then be filled in with bondo. Other builders have installed a plate in the mirror and then tapped and drilled the plate using bolts from the body out into the plate to secure the mirrors. Choose the method that works best for your.



The mirror is then positioned on the body and the corresponding holes drilled in the door. The housing is secured from the hole in the door using flat washers and lock nuts on the studs.



**FIGURE 156. Mirror mounted**

### **Mirror motors**

Check to see what angle the mirror needs to be at for the best possible viewing. Depending on the angle, it may be necessary to remove the portion of the mirror that has the motor cast in place. If so, you will need to fabricate an assembly to hold the mirror motor in place.



It is important to properly align the mirror so that it responds correctly to the mirror controls. When the Up button is pushed, the mirror should tilt up.



The existing Fiero mirror plates are used to secure the new mirrors. Use butyl window tape and silicon sealant to hold the mirror to the plate.

---

### *Interior mirror*

The interior mirror can be salvaged from the Fiero and reused. However there are several mirrors that have lights built in to them that can be used as well.



**FIGURE 157. Chevy Lumina Mirror**

A Chevy Lumina has dome lights built into the bottom of the mirror along with map lights. These can be connected to the dome light switches in the doors.

Because the doors on these cars are normally in an open position when they are parked for people to look at the car, it may be a good idea to have a toggle switch to cut power to the dome lights to save the battery for such an event.



The wiring can be run through the windshield frame and later covered with upholstery.