

## Wiper Plate Mount

The kit comes with an aluminum plate and standoffs used to mount the stock Fiero wiper motor. It is necessary to extend the electrical connections by 12" to the motor. The plate is pre-drilled to accept the stock mounting holes of the wiper motor.

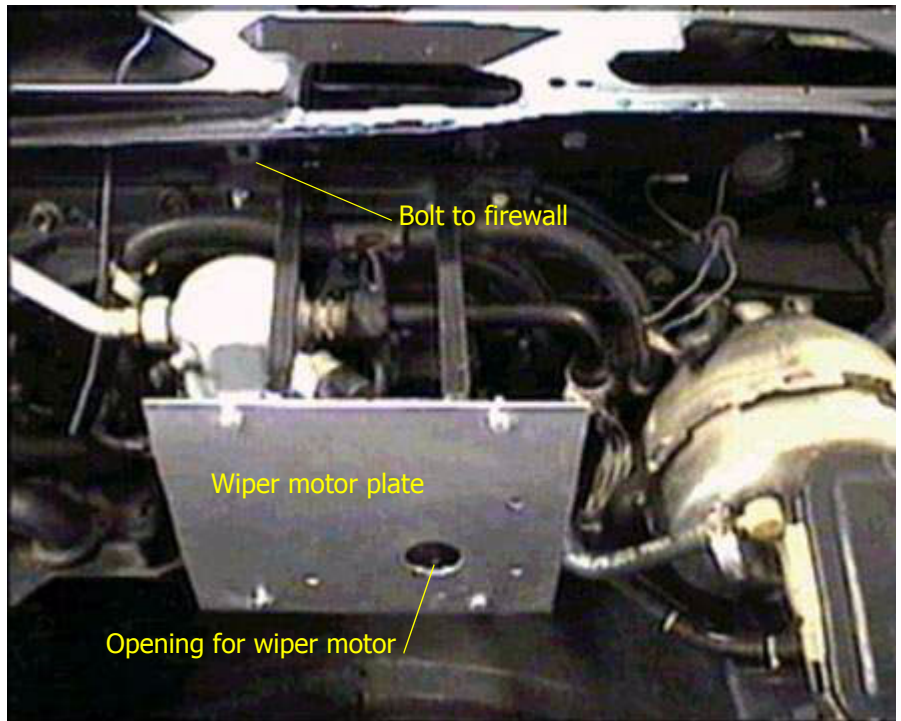
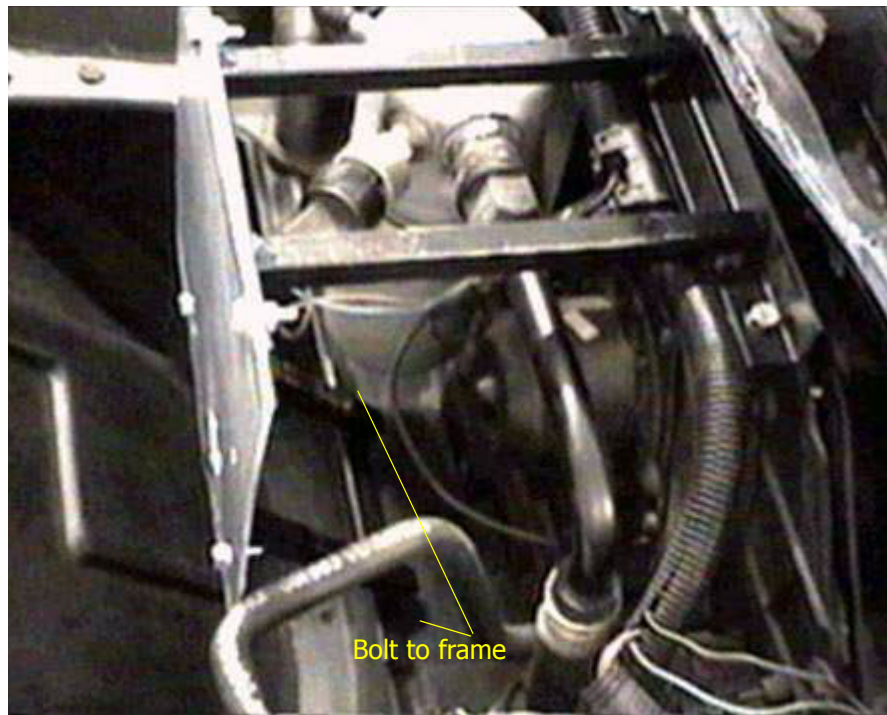


FIGURE 150. Wiper plate - front view



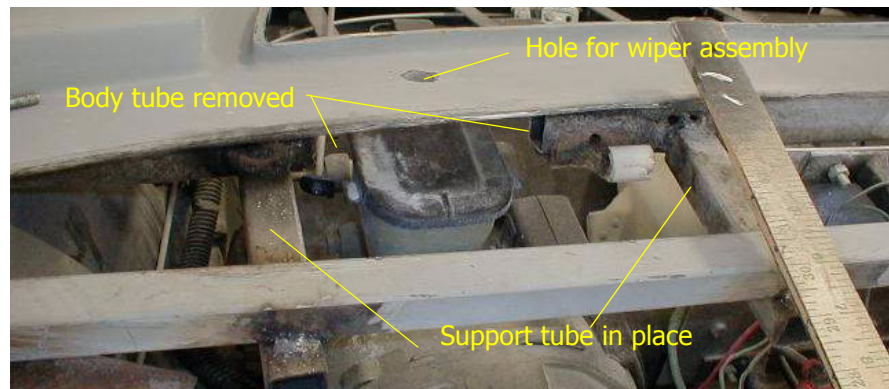
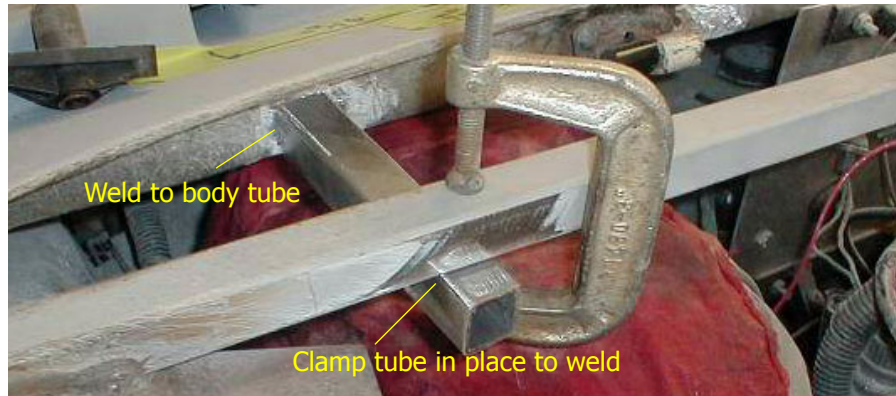
**FIGURE 151. Wiper plate -side view**

---

### **Location of pivot arm**

The kit comes with the necessary components to be able to use the existing Fiero windshield wiper motor and controls for the roadster. You will want to make sure you have established the location of the lower edge of the windshield for proper clearance of the wiper assembly. Next continue by locating the position for the wiper post to extend through the body.



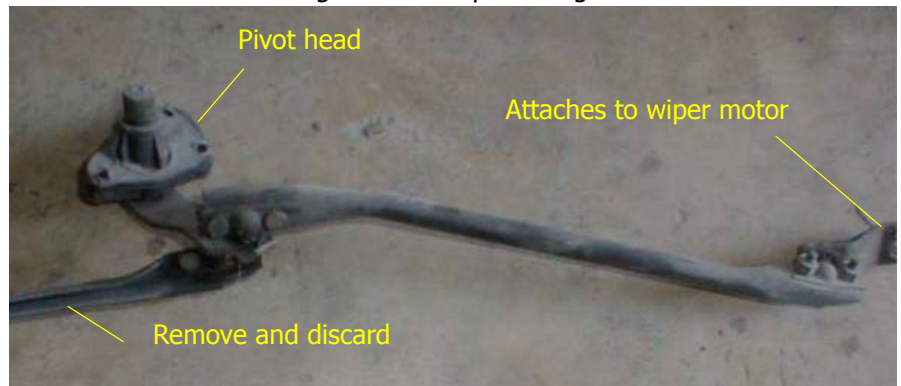


### Wiper Assembly

You will use the existing Fiero motor that has been installed on the special mounting plate. It will require extending the wiring harness to accommodate the new location. This can be accomplished by removing the wiring covers from the existing harness and cut the harness. Splice in sufficient length matching the colors to the original harness ends.



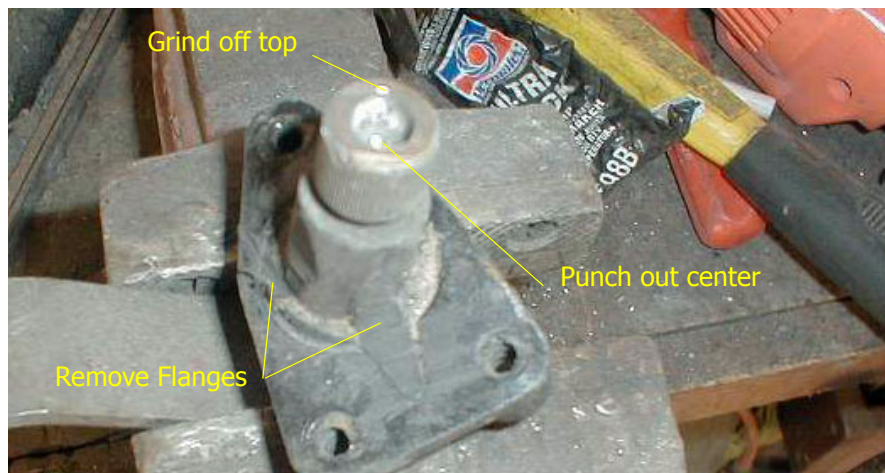
You will use half of the original Fiero wiper linkage.



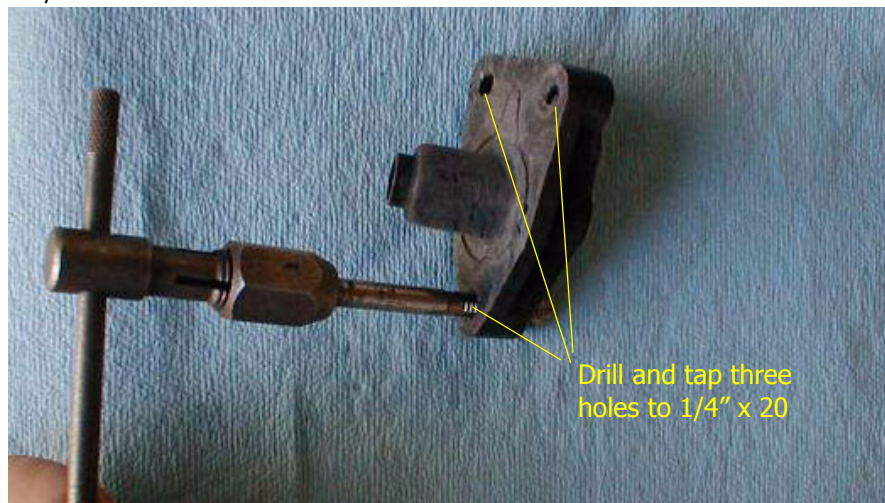
**FIGURE 152. Original Fiero wiper linkage**

---

It will be necessary to remove the cap from the existing arm to change out the pivot rod. To do this, put the pivot head in the vice and grind off the very top of the assembly with a grinder. Once this is done, carefully tap out the rod using a punch. You will also need to grind off the flanges on the side to allow the pivot head assembly to fit through the opening.



Once this is done, you will need to drill and tap the existing holes to accept a 1/4" x 20 bolt.



The kit is supplied with a new arm, spacers, heim joint and washer to assemble the new arm.

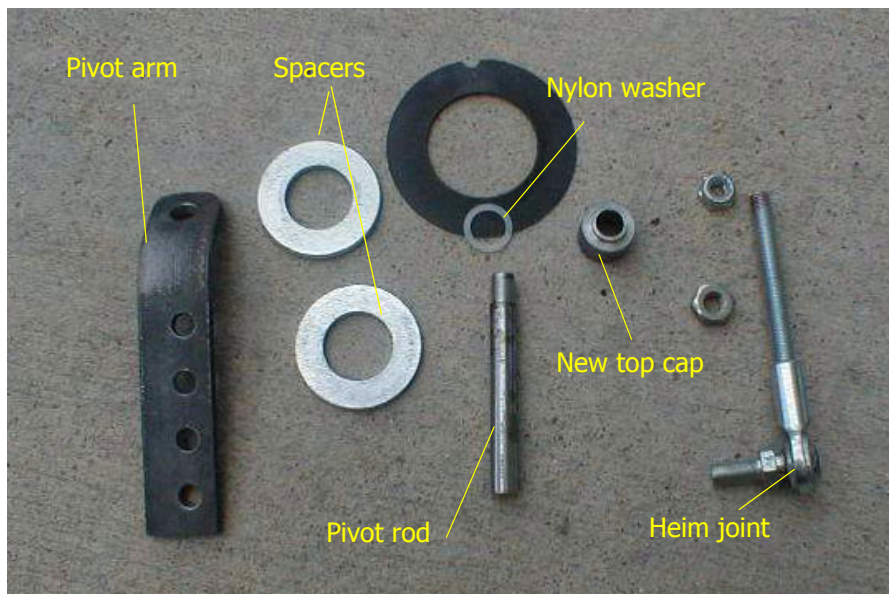
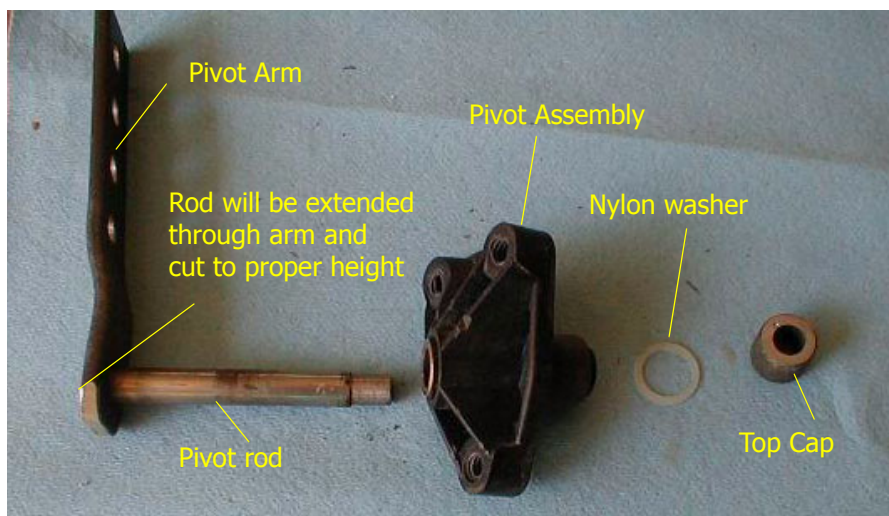
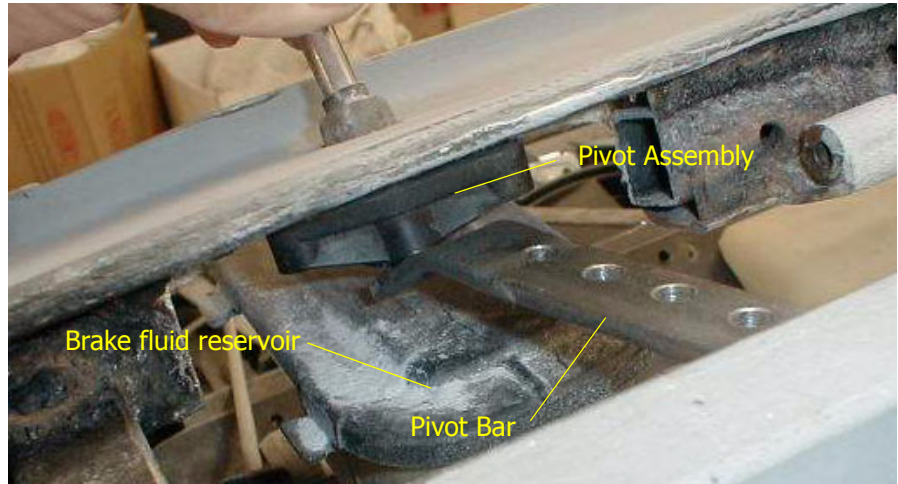


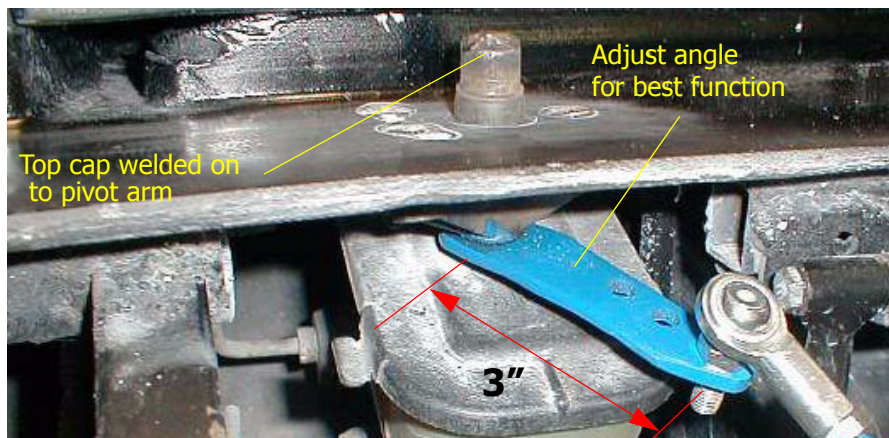
FIGURE 153. New wiper assembly pieces



You can begin by welding the top cap to the new pivot rod. Do not weld the rod to the pivot bar until you determine the proper height. Depending on the thickness of the fiberglass, you may need to add spacers to get the proper settings.



Once you have determined the proper location and angle to the windshield, you will drill three holes to fasten the pivot assembly to the body. The length from the center of the pivot rod to the heim joint location should be 3" to achieve the proper sweep on the arm.

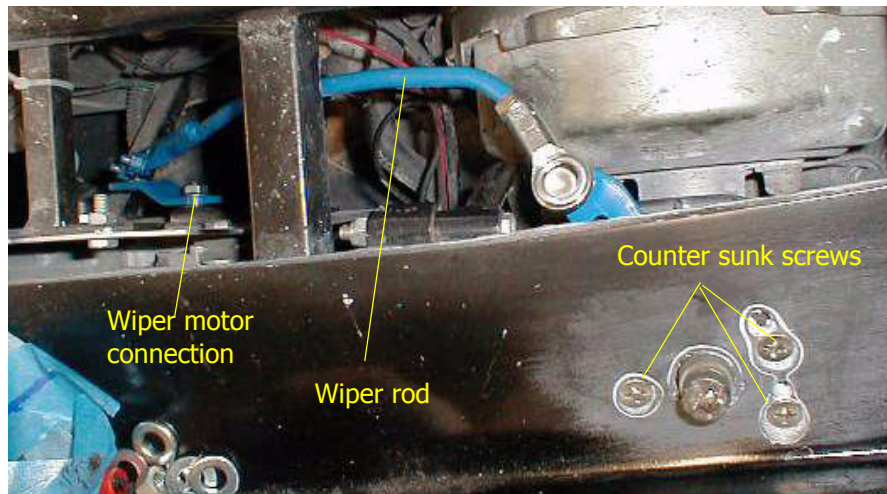


The original Fiero linkage is cut and welded to a rod with the Heim joint connected to it.

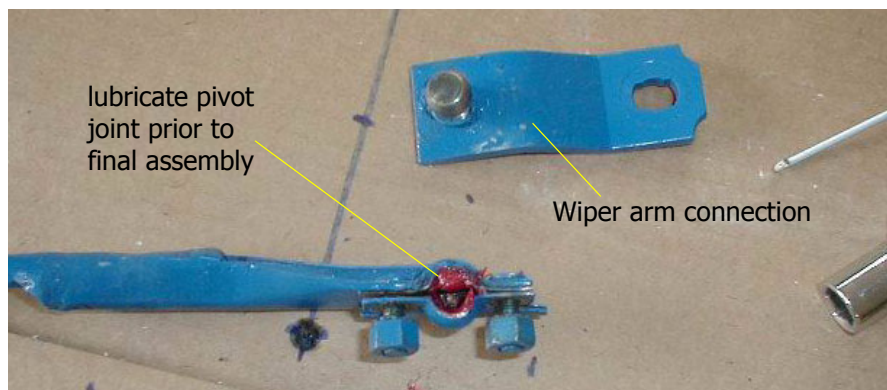


**FIGURE 154. Final assembled arm components**

---



Be sure to check the sweep of the wiper arm before the dash and windshield are finally positioned. It is also a good idea to be sure and lubricate the attachment to the wiper motor.



Once the windshield is installed, you can install the wiper blades.

**FIGURE 155.**



**Windshield wiper installed**

---

This page intentionally left blank.