

When you get to this chapter you are now starting on the finish that will make your car one that will be complete your hard work. This chapter will cover the installation of the door panels, headliner and carpet. If you have purchased the interior kit, it will come with the seats, dash, center console and all of the carpeting needed to finish out the interior.



Interior pieces



FIGURE 180. Door Panels

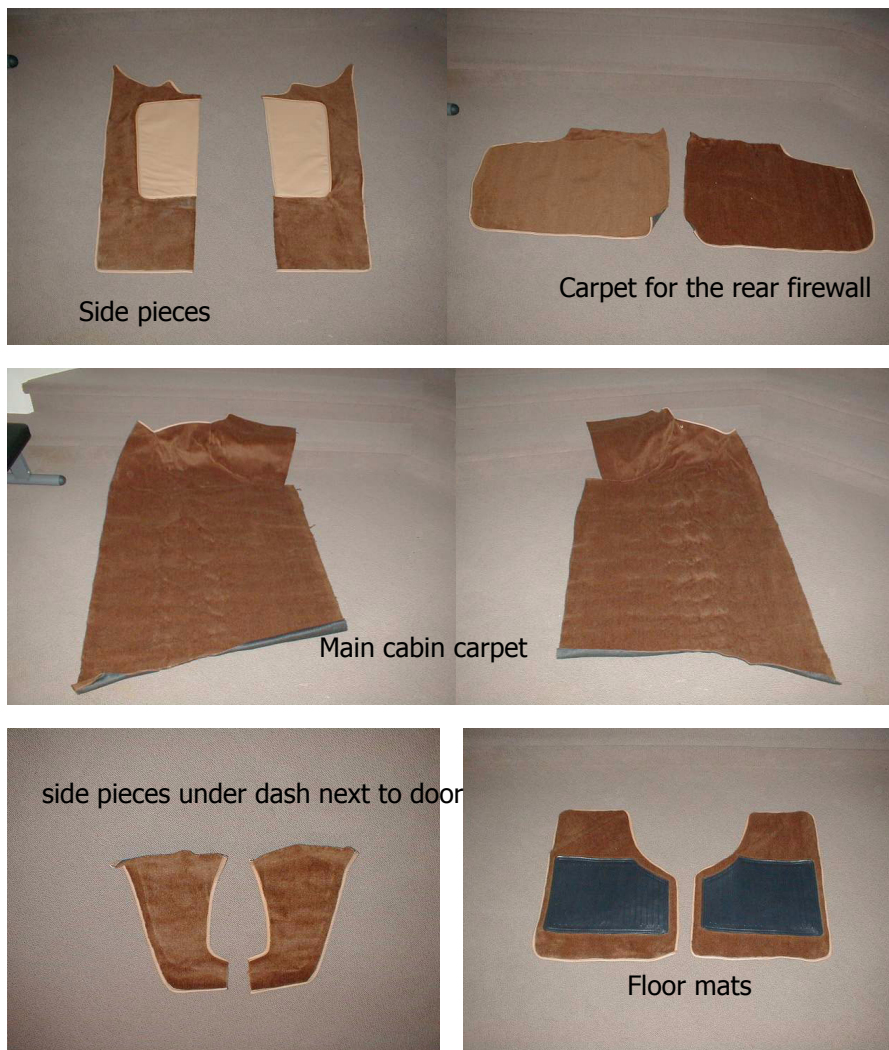


FIGURE 181. Main carpet pieces

Side Panels



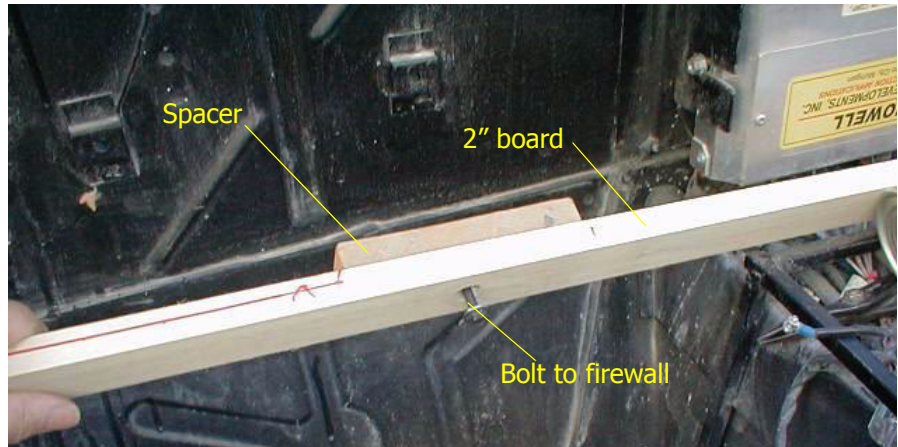
The kit comes with side door panels that close in the opening between the body and the Fiero tub at the door locations. The panel is bondoed to the side of the body and the panel glassed to the tub.

The areas from the firewall to the back of the door are filled in with FRB board. The FRB board is then glassed in place to produce a sealed area. You can mount your speakers in the FRB board. You will need to use the speaker hole to gain access to the cable guides for the roof release.

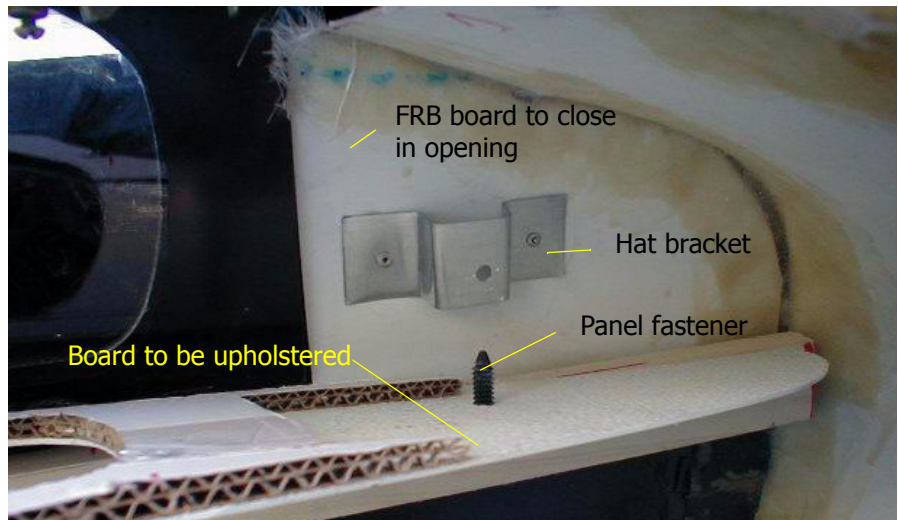


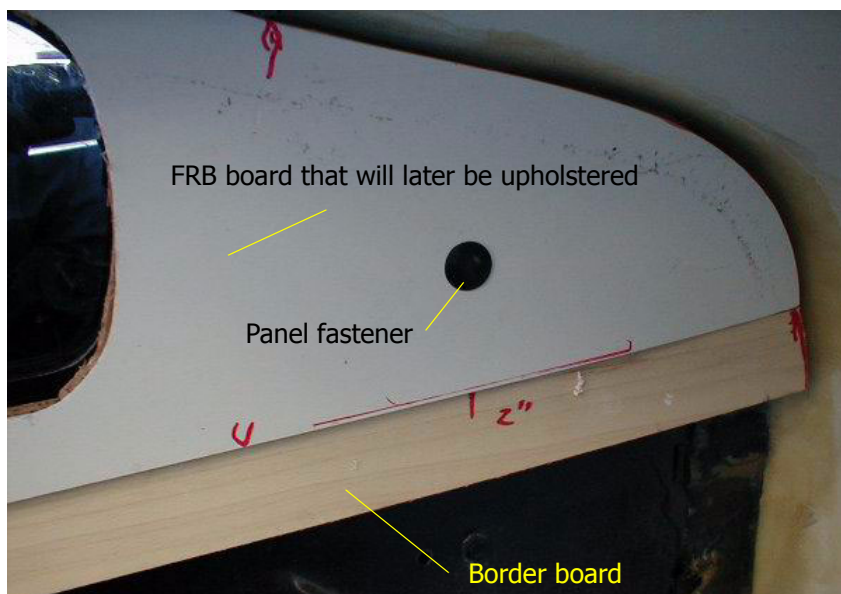
FIGURE 182. Side Panels

For the firewall, install a 2" board that will be used as a border for upholstery around the rear window and carpeting below. This board is bolted to the firewall and uses a wooden spacer to provide an offset.



The gap above the firewall to the roof is closed in with FRB board and glassed into place. A simple tin hat bracket is fabricated and pop riveted to the FRB board. An upholstery panel fastener is used to secure the second piece of FRB board that will be upholstered and attached to the rear hat bracket.



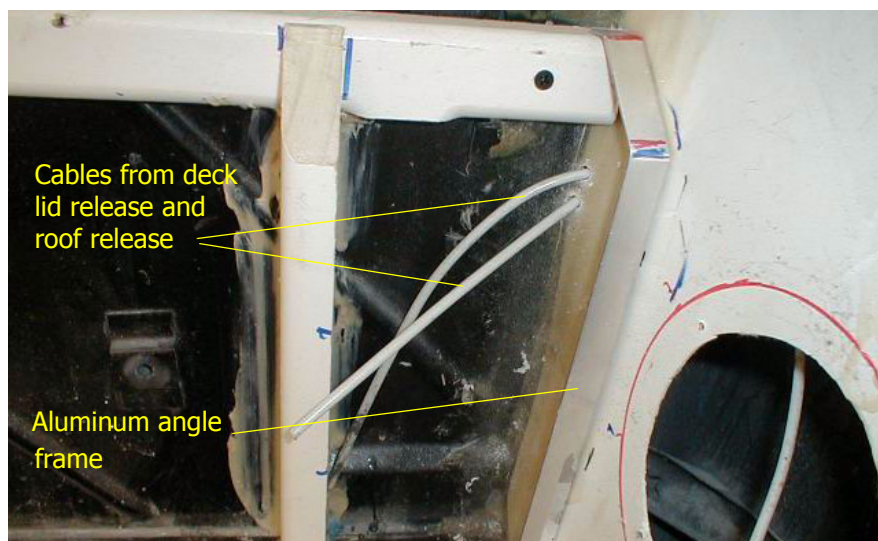


Framing for Roof Release Assembly

Part of the interior is to accommodate the roof release mechanism. See the Roof Section for the assembly of the release mechanism. We will start with creating an area to mount the handles.

Once the center console location has been determined, you will frame in an area on either side that will later be covered with carpeting and finish out the firewall area in back of the seats.

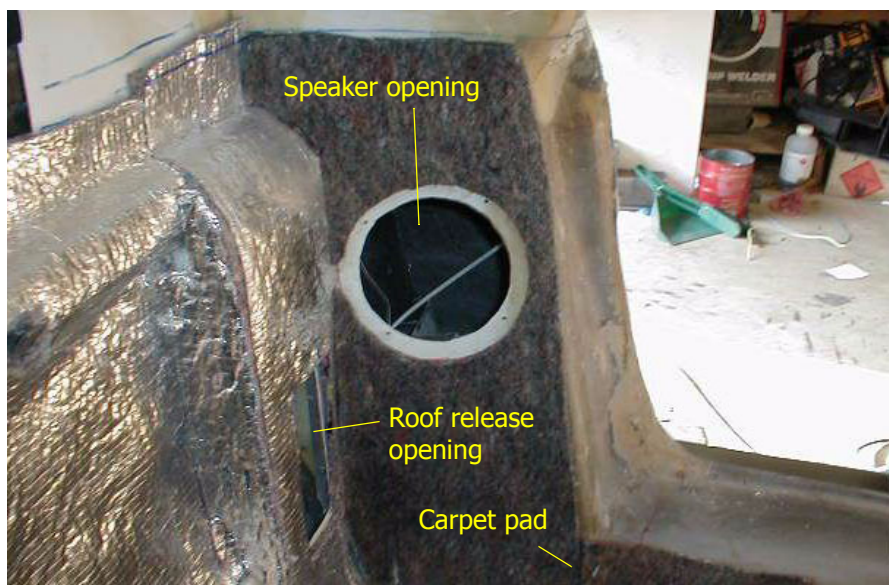
The framework is glued and secured to the firewall with screws. You will need to construct a frame on the FRB from aluminum angle iron to form the housing to support the Fiero handle.



Fill in the area between the wooden frame and the aluminum angle with FRB board. Cut a square hole to accommodate the Fiero door plate. This area is covered with heat resistant insulation.

The sides are covered with the carpet padding to cut down on road noise. Once this is completed, the area is covered with carpet that is glued to the top of the padding with spray adhesive.

When you cut the padding around the speaker opening, cut it back from the opening so that when the carpet is glued, it will still allow the speaker cover to be recessed into the carpet.





Door Panels

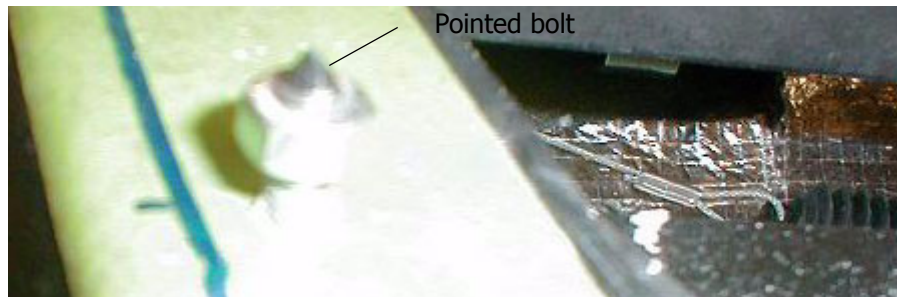
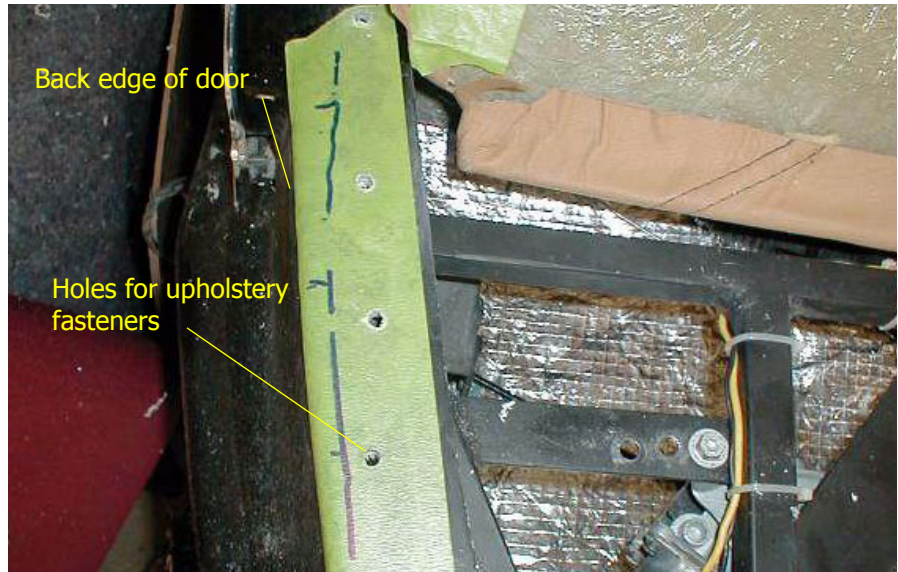
The door panels are secured to the frame by an "L" bracket accessible through the speaker opening. See the Doors section. The rest of the panel is fastened with upholstery fasteners on the back edge and screws on the bottom and front edge.



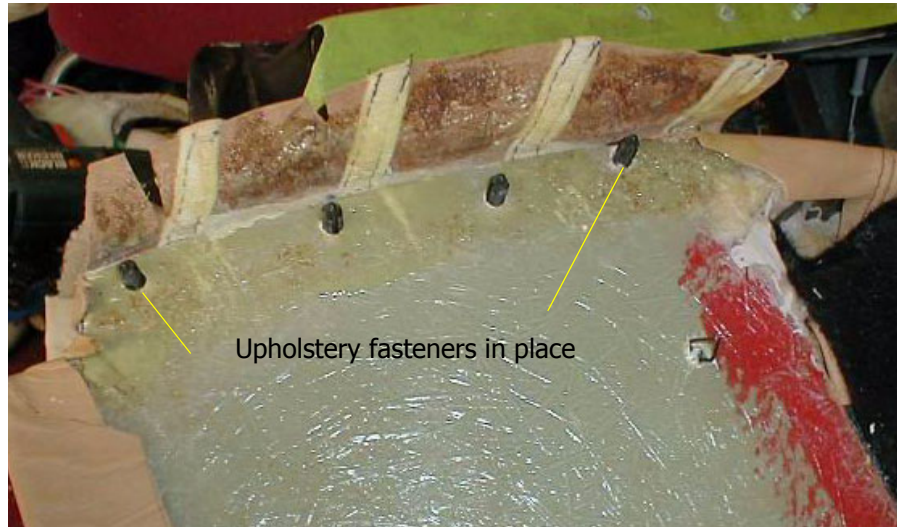
Upholstery Fasteners

The back edge of the door panel is secured to the door with upholstery fasteners. Start by placing masking tape on the inner door frame. Set the panel in place on the door and mark the edge of the panel. Remove the panel and drill 1/4" holes evenly spaced along the back edge of the door.

In order to determine where the proper location should be for the fasteners to align with the holes, Take a 1/4" bolt, cut the head off and grind it to a point. Thread a nut on the bolt and place it in one of the holes. Now set the panel on the door and press down on the pointed bolt. This will leave an impression where to drill the hold in the panel.



Peel back the upholstery on the inner door panel and drill the first hole. Insert an upholstery fastener through the hole and place the panel back on the door frame. With the first fastener partially inserted into the first hole, you can mark the remaining holes. Once all the fasteners have been inserted, you can glue back the leather to the door panel.

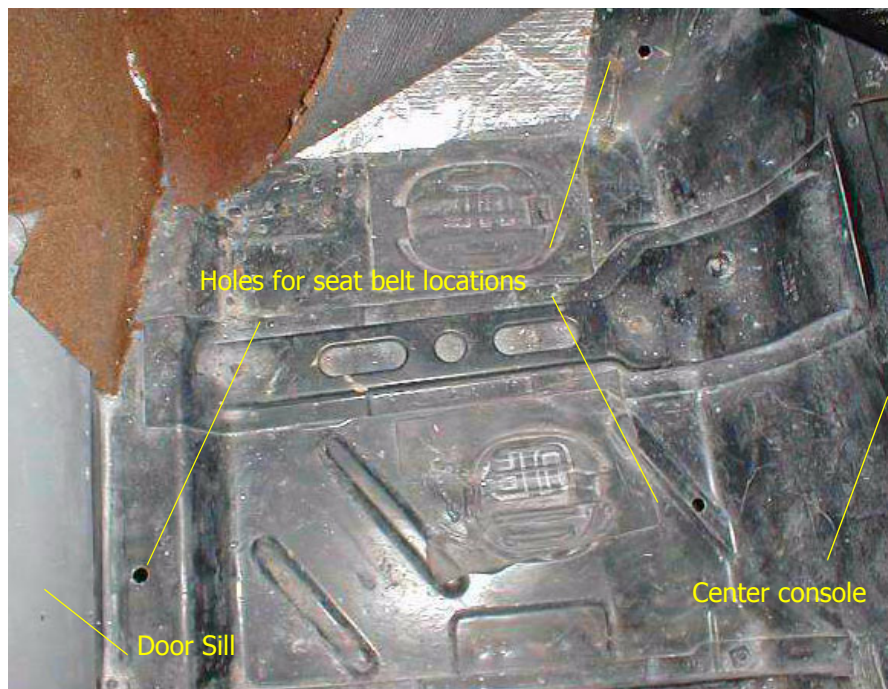


Now secure the panel to the door frame by pushing the upholstery fasteners into the holes on the door frame. Bolt the panel through the speaker opening and then use chrome screws and caps to secure the bottom and front edge to the door.

Seat Belts

Before you install the carpet, you will want to locate the seat belt brackets installation points on both the floor and the firewall. Once these points have been located, continue with the carpet installation.

The seat belts will be bolted in once the carpet has been installed. To find the holes after the carpet is installed, use an awl that is worked through the pad and carpet.



Carpet

The carpet is installed over the top of the felt carpet padding that is supplied as part of the kit. Cut the padding to the proper shape and then use spray adhesive to glue it to the Fiero chassis.

Test fit the carpet to make sure that it fits properly. Once you are satisfied with the fit, use spray carpet adhesive to secure it in place.



FIGURE 183. Carpet Pad

The panels on the sides of the dash are filled in with FRB board and then covered with a thin foam. Actually a headliner padding will work well in this situation.

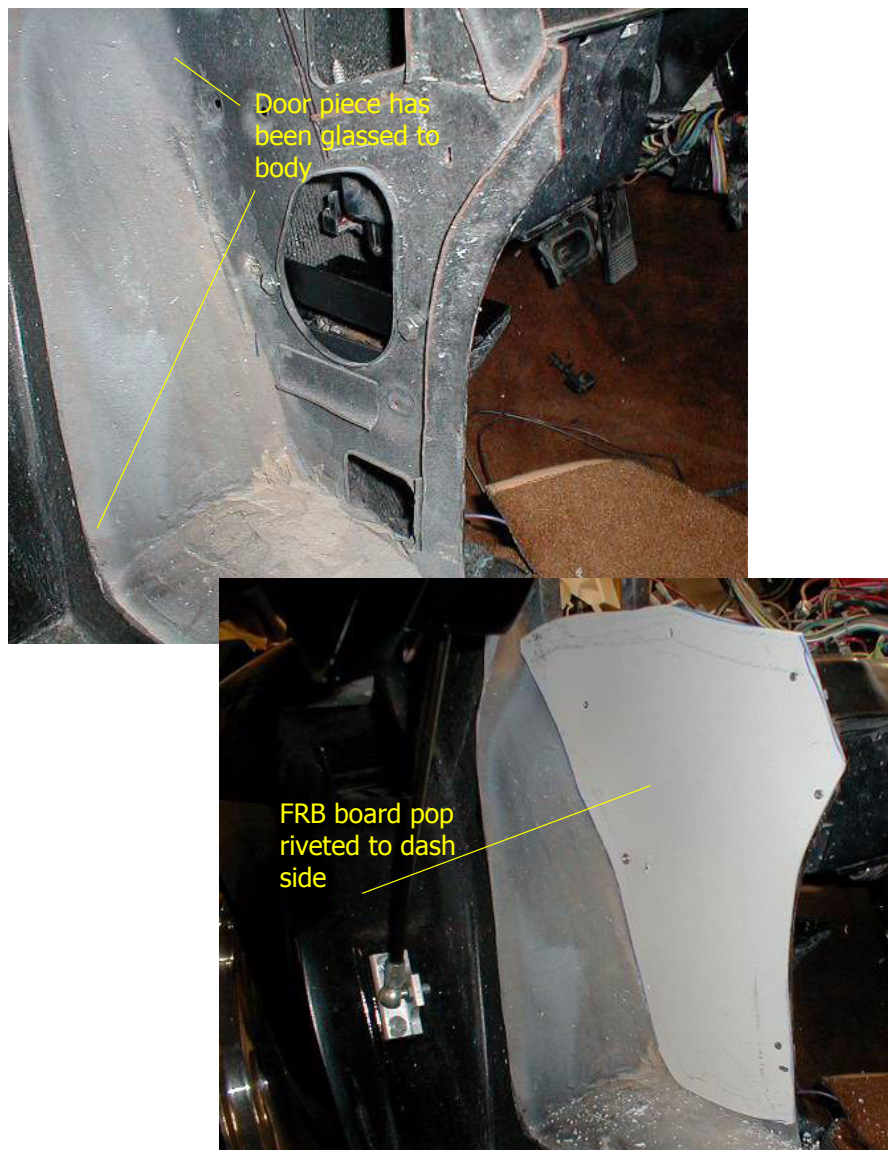
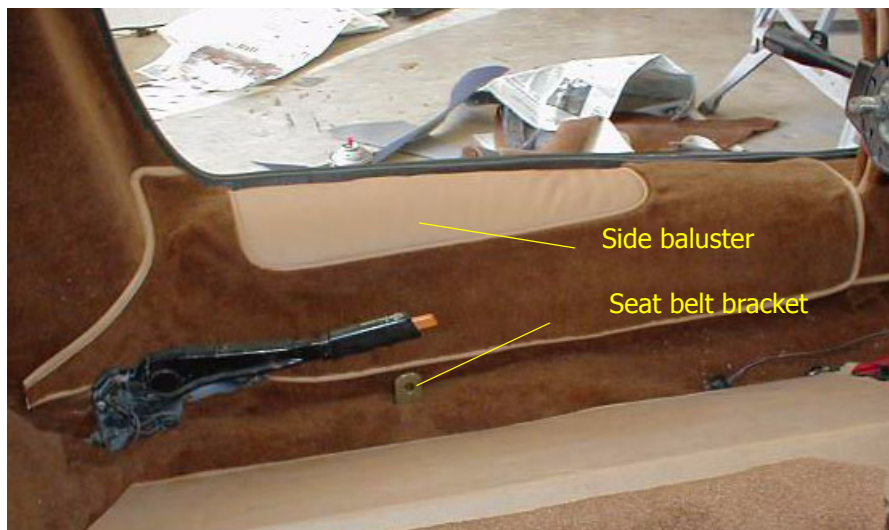


FIGURE 184. Dash side filler



Now glue the carpet to the foam to complete the door jam area.





Complete the interior covering the side panels, back window and top with foam and vinyl to give a finished look.

This page intentionally left blank