

# Grills

This chapter deals with the installation of the headlights, fog lights, taillights and the grills that are used on the Phantom kit.

---

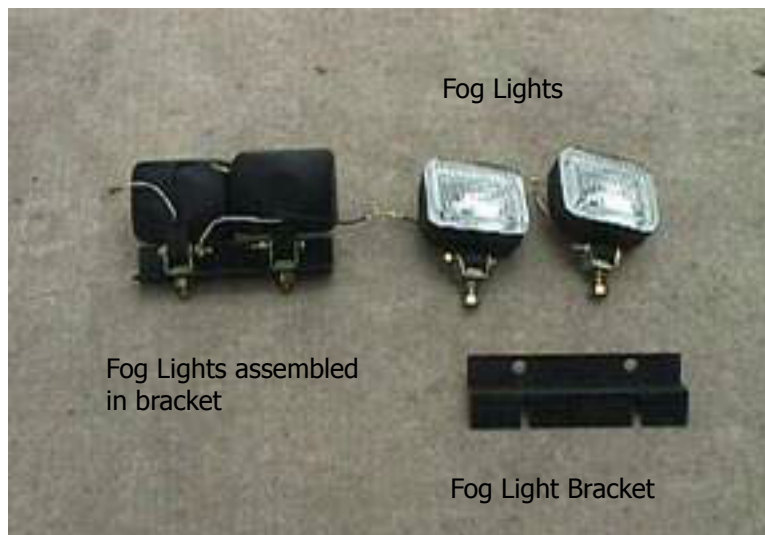
## *Top, Rear and Front Grills*

The following picture shows the rear grill, the two radiator grills, the motor deck lid grill and the two front grills by the fog lights. Depending on your color scheme that you select, you may wish to have these pieces powder coated for a quality finish. The emblems shown on the rear grill are not part of the package.



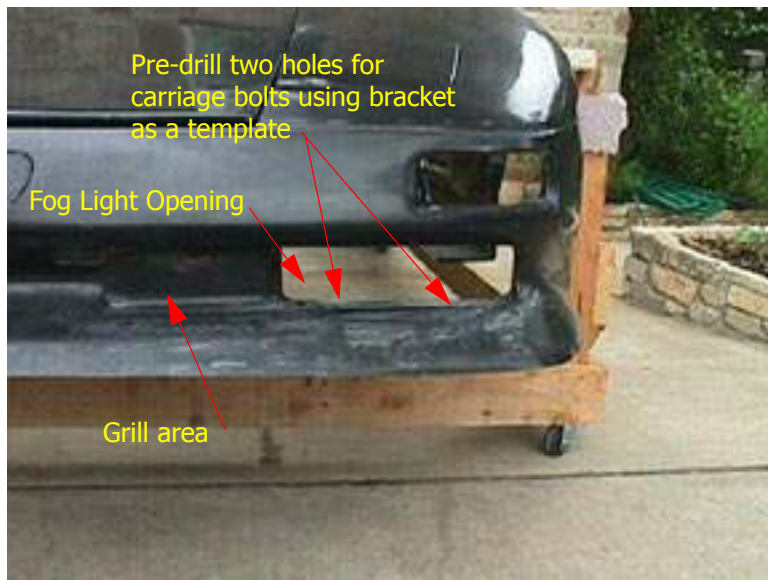
### *Fog lights and Front Grills*

The front bumper has the openings for the fog lights and a narrow grill work that will allow airflow into the radiator. These are installed side by side. The fog light assembly consists of two fog lights and a bracket that they are bolted to. This bracket is secured to the car with two carriage bolts that are concealed by the fog lights themselves.



**FIGURE 60. Fog Light components**

---



**FIGURE 61. Bumper before fog lights and grill**

---

It may be necessary to grind the corners of the opening to ensure a good fit of the fog lights next to the outside of the car.



**FIGURE 62. Fog Lights and Grills installed**

---

### *Rear Grills*

The rear grills are easily inserted into the rear bumper by using 1/4" bolts and flat washers. It is necessary to cut slots in the fiberglass to slip the grill bolts into. Be sure to test fit the grills prior to cutting the slots.

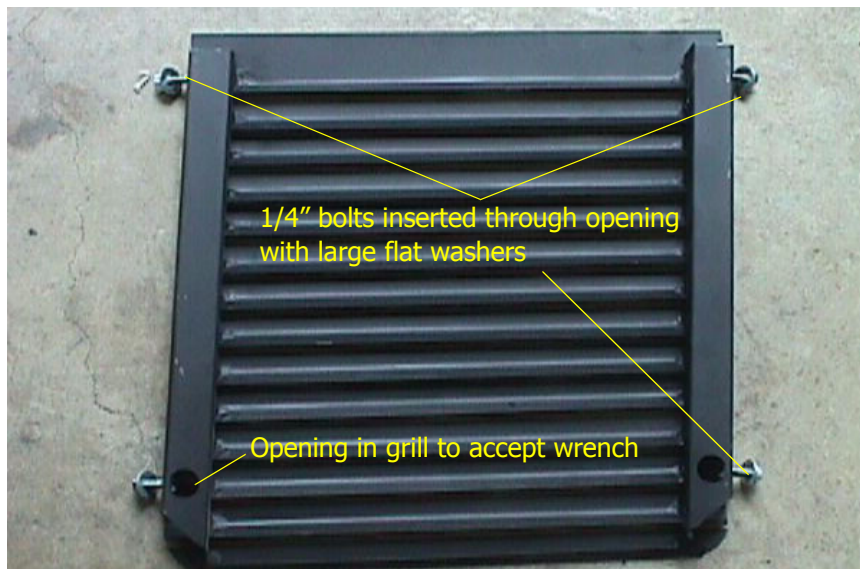
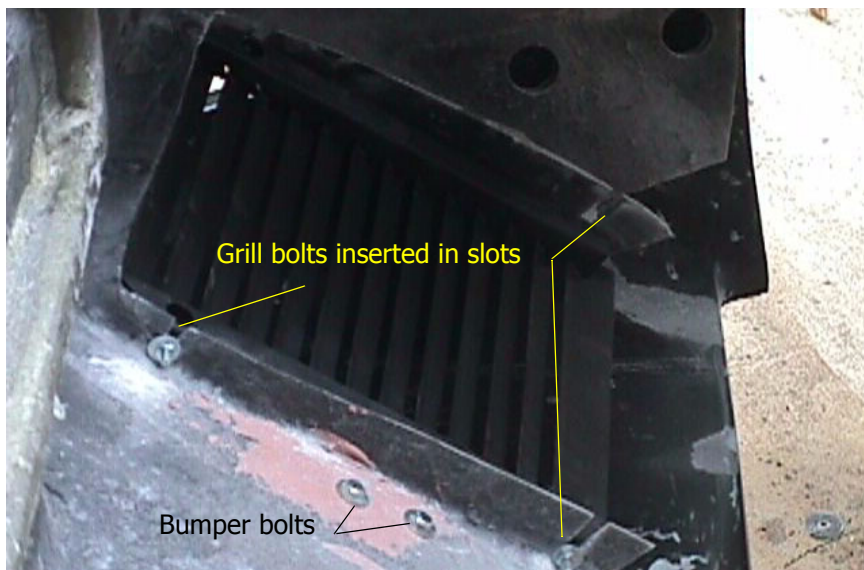


FIGURE 63. Rear radiator grill



Depending on when your car is painted and the location of the radiators, it may be difficult to get in the side bolts. You may find it useful to drill an access hole through the side. This hole will be covered when the bumper is mounted.



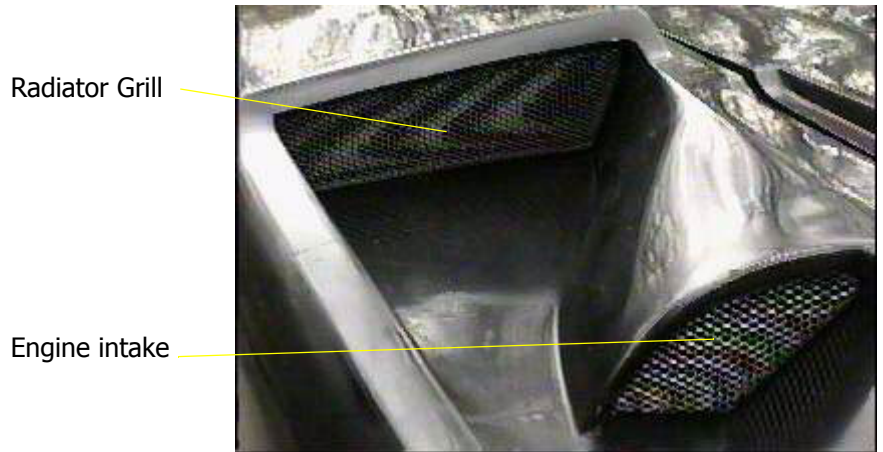
**FIGURE 64. Alternative access location**

---

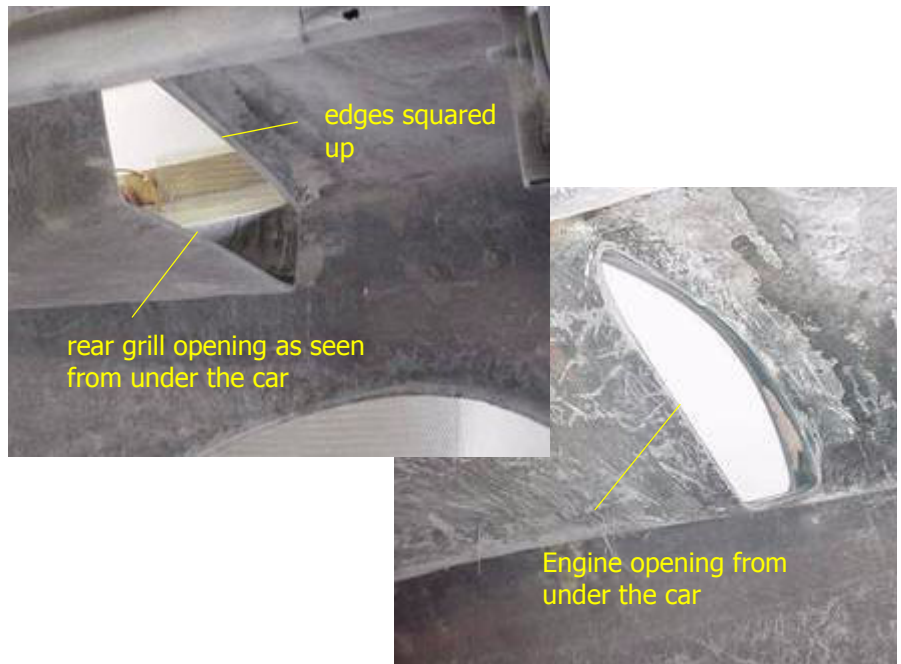
### *Motor Intake Grills*

There are four grill areas that will be covered with wire mesh. First is the rear opening that provides air to the rear radiator, second the air intakes to the engine compartment, third the openings in front of the rear wheels and fourth the openings directly in front of the windshield for fresh air intakes.

You may use something as simple as "gutter guard" that will be bonded to the inside of the body.



The grills for the engine compartment are covered with a wire mesh. This process begins by making sure the edges of the vents are squared off.





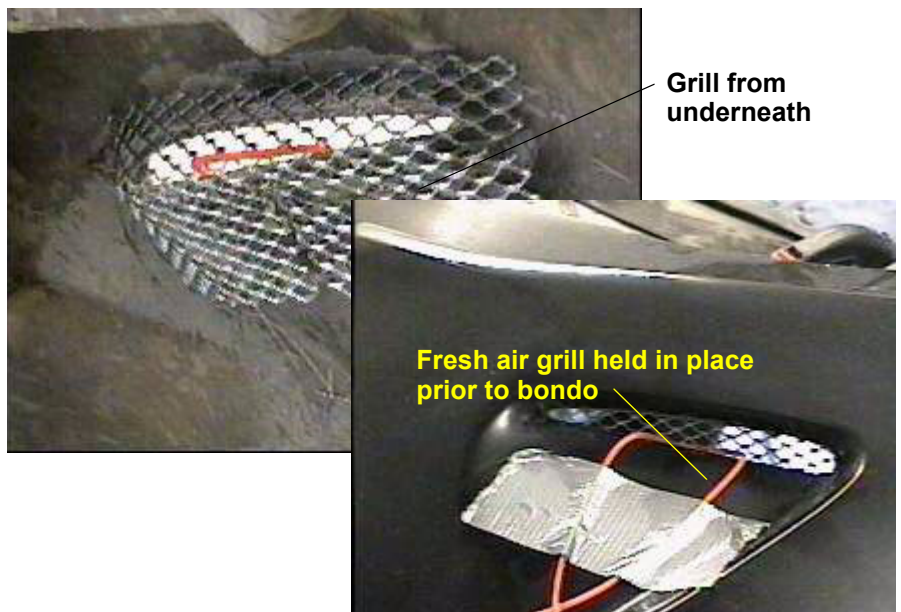
---

*Bottom Grills*

Repeat the process for the bottom grill and the fresh air grill.



**FIGURE 65. Bottom Grill**

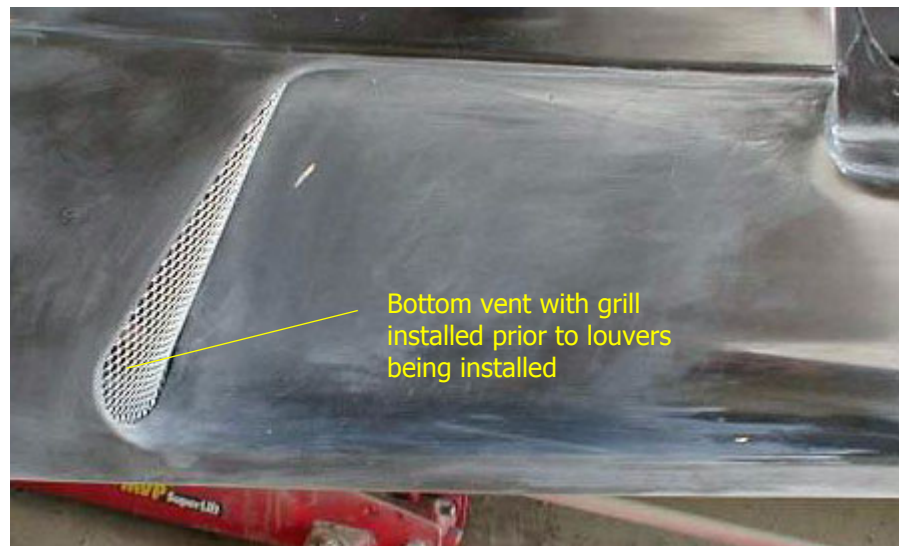


**FIGURE 66. Fresh air grill**

### *Side Louvers*

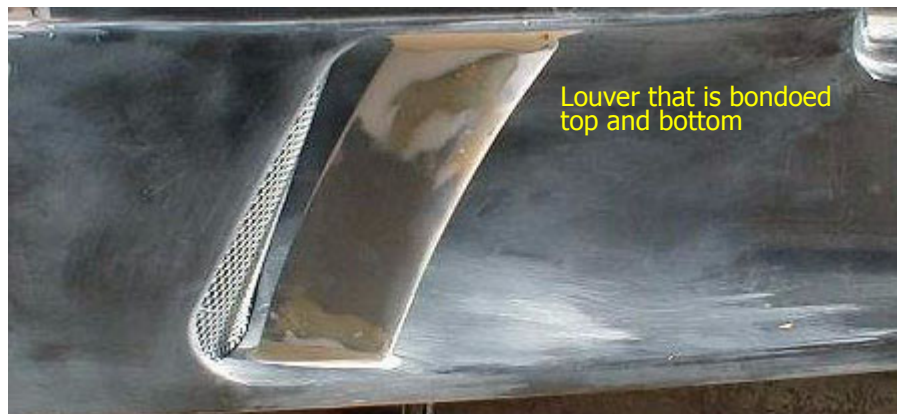


The side louvers consist of two fiberglass pieces that will be bonded into place.





**FIGURE 67. Two louvers**



You may have to work with the angle and positioning prior to securing the louvers in place with bondo. Try to make sure the bondo is smoothed as close to the final shape while it is still pliable. It is tedious to sand the back area of the louvers. Wrapping sandpaper around a dowel can be helpful to reach a tight area.



**FIGURE 68. Final louver assembly**

---