

Deck Lid

This will chapter will detail the installation of the rear bumper, the front trunk and the two decklids that cover the engine and the rear storage compartment.

Motor Deck Lid

This section will deal with the motor deck lid, the gas shocks, the receivers for the roof and the rear grill.



Deck lid Hinges

The motor deck lid is fastened to the firewall using 1/4" bolts and flat washers. The hinges can either be bolted directly to the fiberglass or you may optionally install a plate that can be drilled and tapped to accept the bolts. This will provide a more stable anchor as the decklids are under pressure from the gas shocks.

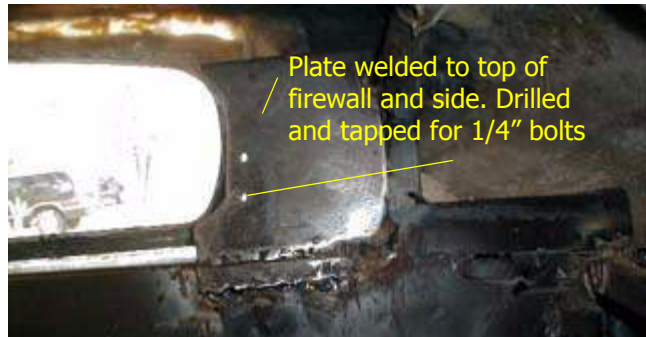


FIGURE 108. Anchor plate for deck lid hinges



FIGURE 109. Deck lid hinge detail

Roof Receivers

The roof is stored on top of the motor deck lid. It is necessary to mount install two receivers in the motor deck lid to accept the pins in the roof for storage.

Once the deck lid hinges have been fastened to the car, place the roof on the deck lid and locate where the receivers need to be installed. Obviously you need to have located the mounting pins in the roof prior to this step. See the section on the roof for how to accomplish this prerequisite.

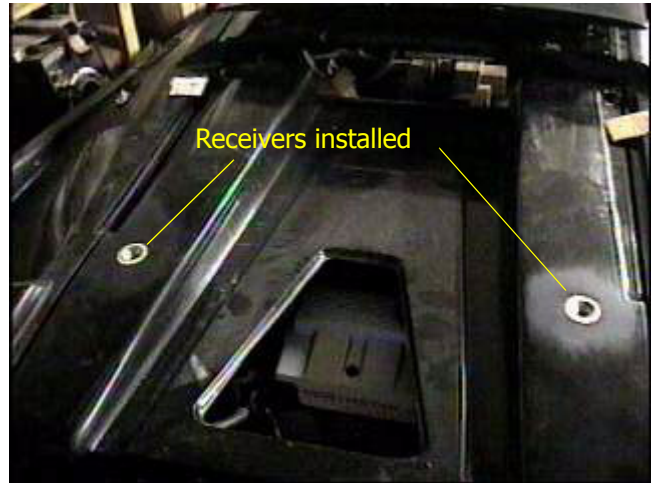
Begin by selecting a hole saw that is the same size as the receiver. Drill the opening in the deck lid. It will be necessary to fasten the receiver from the underside.



FIGURE 110. Receiver hole



FIGURE 111. Receiver mount



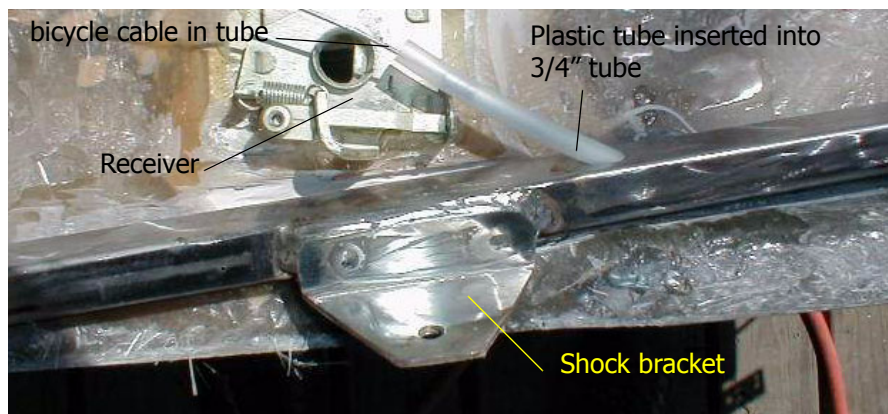
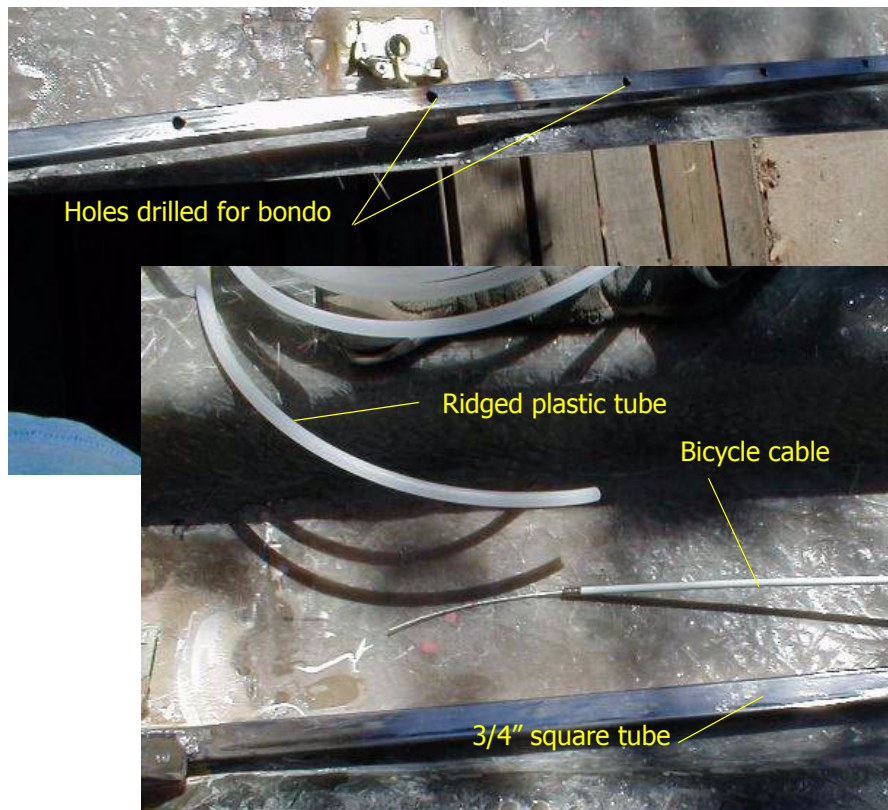
The receivers can be operated with electric solenoids or by a manual cable. The installation shown here is for the manual cable. You may use a bicycle brake or shifter cable for this purpose.

Cable and Shock Mounts

Because the gas shocks exert constant pressure against the deck lid, you may wish to add some additional reinforcing to the deck lid to prevent warping the lid. You can also use this extra reinforcing to hide the bicycle cable as well as fasten the bracket that will hold the end of the shock assembly.

One hint is to use a small plastic hose that can be inserted as a guide for the bicycle cable. This type of hose can typically be found at a hardware store and is commonly used for plumbing under sinks.

Use a 3/4" square tube that has been bent to the contour of the deck lid. You can drill holes on the side that will be fastened to the deck lid to allow the bondo to create a better bond. This tube will be glassed in later.



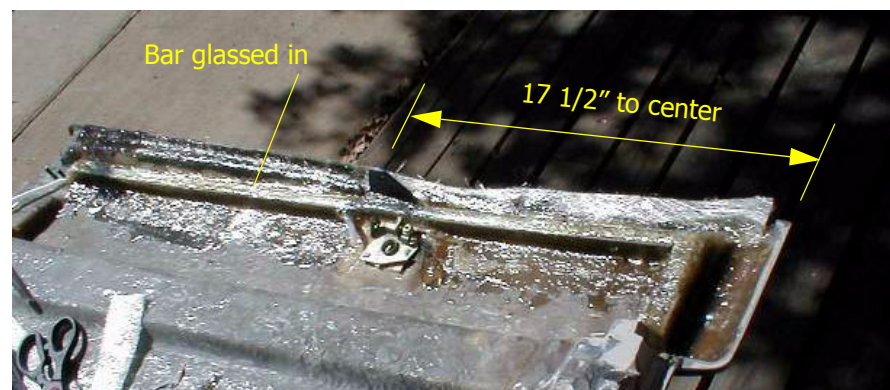


FIGURE 112. Location of shock support

The shock mounting bracket is positioned 17 1/2" from the end of the deck lid edge. The other end of the shock is mounted on the frame.



FIGURE 113. Upper shock mounted on motor deck lid



FIGURE 114. Body shock mount for motor deck lid

A piece of square tube is welded to the body support and a hole drill and tapped to accept the lower shock ball.

Deck Lid Grill and Latch Assembly

To be able to latch the deck lid and still leave a way to vent the engine compartment, you may wish to fabricate a framework that will hold a grill. This will consist of a frame that will be bonded to the deck lid, a grill and a frame to hold the grill in place.





The first step after mounting the motor deck lid, is to look at the latch locations for closing and locking the deck lid. This will set the requirements for where the deck lid grill will need to be positioned

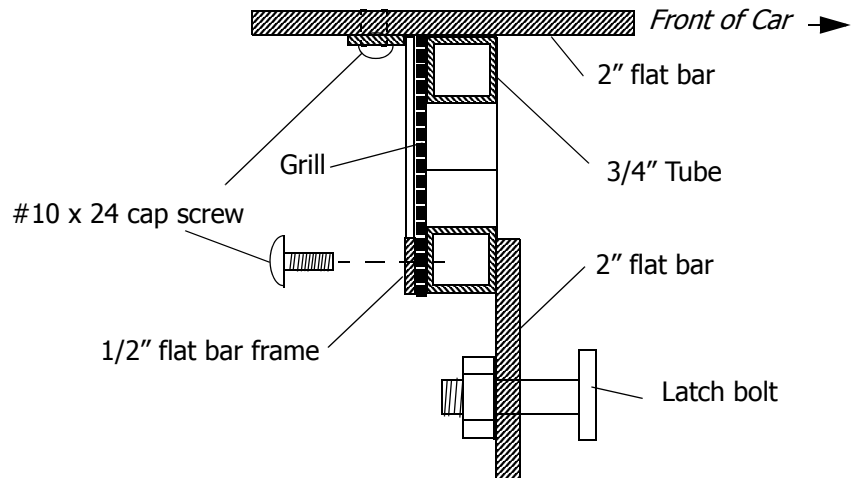


FIGURE 115. Cross section of grill assembly

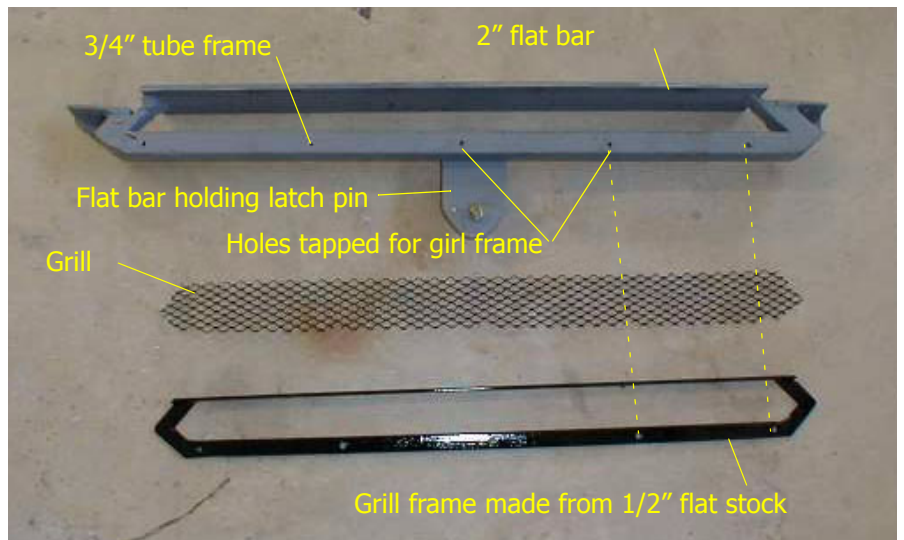


FIGURE 116. Grill components

The 2" flat bar is drilled to allow the bondo to protrude and make a solid connection prior to glassing it in place.

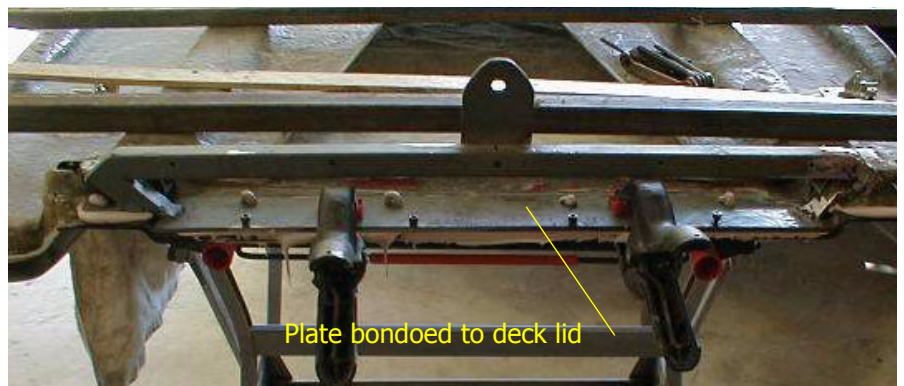


FIGURE 117. Deck lid frame latch

Once the frame is positioned, you can now focus on locating the latch on the back of the Fiero firewall.

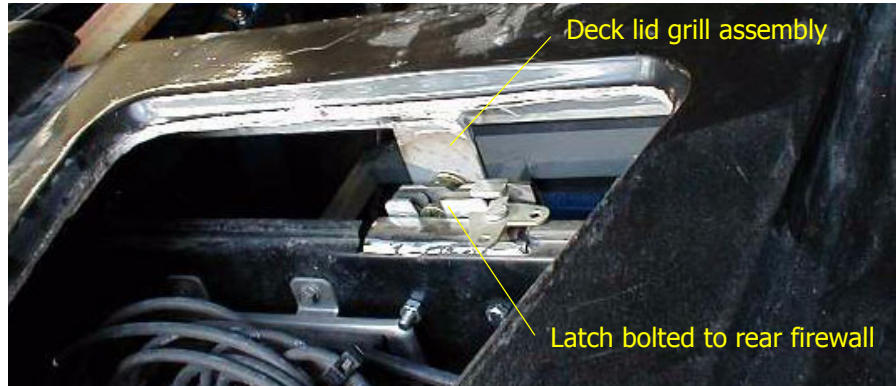


FIGURE 118. Latch as viewed through deck lid

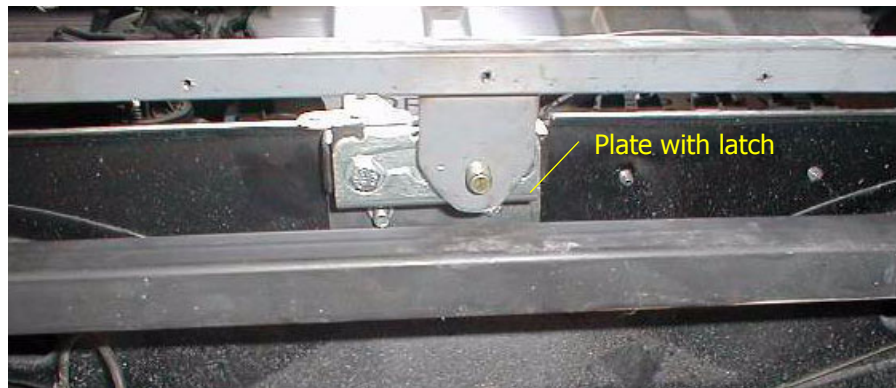


FIGURE 119. Latch as viewed from rear

The latch is bolted to a plate and the plate is bolted to the firewall.

The latch can be opened either with a cable or you may use a solenoid that is triggered from a keyless entry device on your alarm system. This is one solution that uses a solenoid and a connecting rod to release the deck lid.



FIGURE 120. Solenoid release

This page intentionally left blank.