

Bumpers

This will chapter will detail the installation of the rear bumper, the front trunk and the two deck lids that cover the engine and the rear storage compartment.



It will be necessary to check for fit of the rear bumper prior to any connections are made. If necessary, you may have to grind a small area to ensure a good fit.



FIGURE 121. Rear Bumper

To fasten the rear bumper to the body, it is necessary to fabricate a metal plate that is drilled and tapped to accommodate a bolt through the body. The best way to accomplish this is to drill a hole through the bottom of the bumper that will not be seen when it is mounted. A 1 1/2" hole saw works well for this part. Once this hole is drilled, insert a 1" x 1/4" flat bar into the hole. Drill and tap a 1/4" hole in the center that will be countersunk to hold the bar in place. Secure the bar with the 1/4" screw and then drill and tap two 5/16" holes through the bumper into the metal flat bar approximately 4" apart.

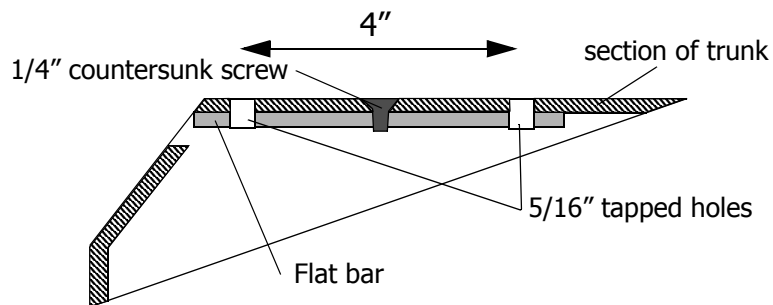


FIGURE 122. Diagram of flat bar assembly

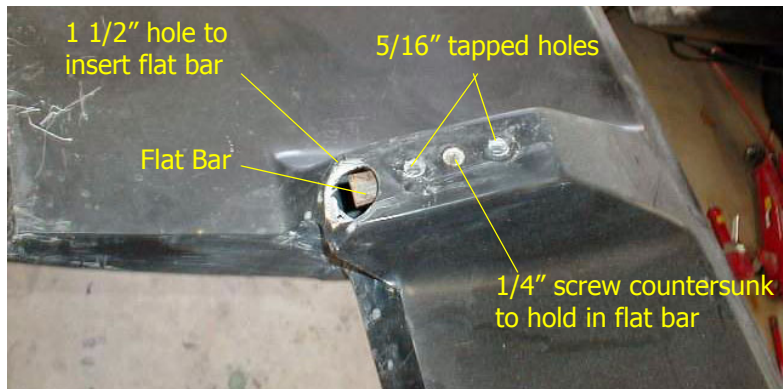


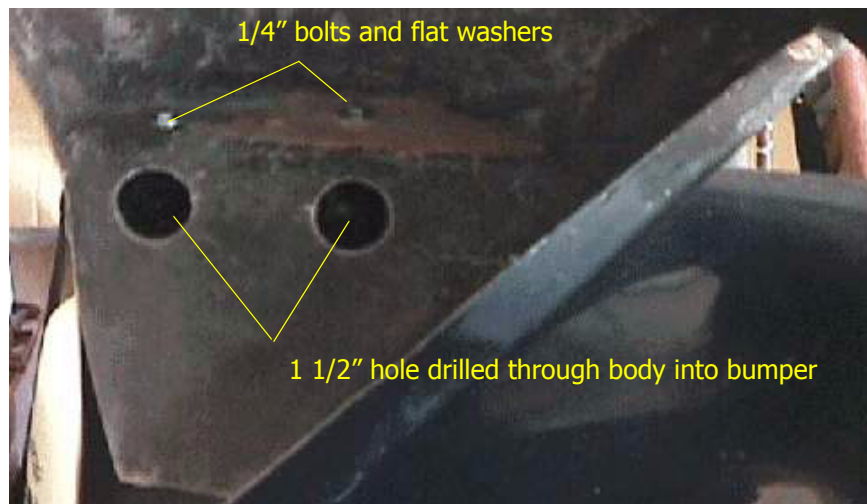
FIGURE 123. Flat bar installed

The 5/6" holes will be used to secure the bumper to the back edge of the car using 5/16" bolts with flat washers.



FIGURE 124. Bumper to back of body connections

Once the bumper has been temporarily positioned, drill two 1 1/2" diameter holes through the body and the inner wall of the bumper. Drill two 1/4" holes down through the body into the bumper. The bumper will be bolted



to each side with 1/4" bolts and flat washers. The 1 1/2" holes allow you to get a wrench on the bolts to tighten them. Repeat for other side.



FIGURE 125. Side bumper mounting holes

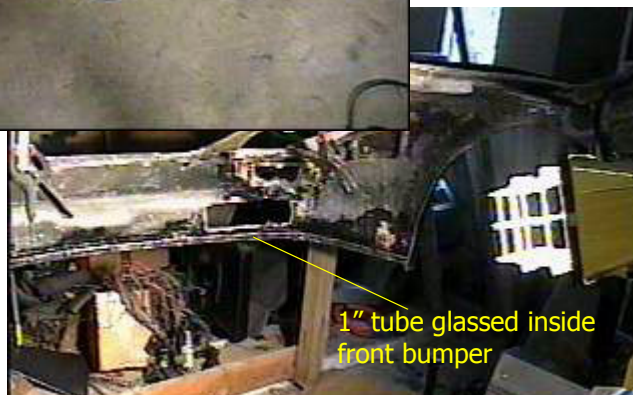
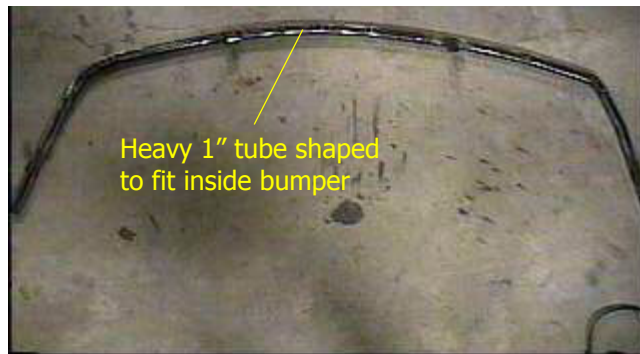


FIGURE 126. Body holes for bumper

Front Bumper skid plate

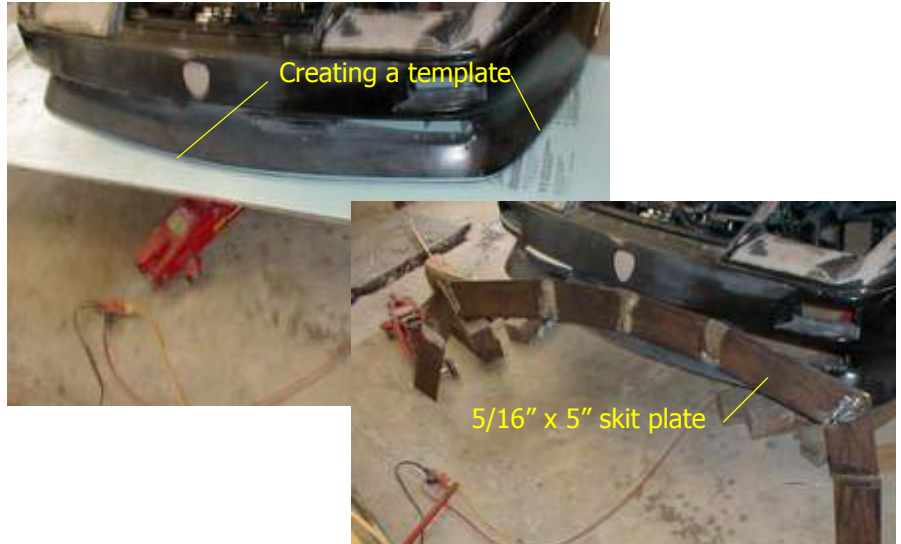
The front edge of the fiberglass bumper is very low. It would be a good idea to install a skid plate to reinforce the front edge to avoid cracking or breaking it should you encounter an obstacle.

Start by fashioning a curved tube out of heavy 1" square tube that will be glassed onto the body just above the edge of the bumper.



Next, make a template of the front bumper area that will be used as a pattern for the skid plate. Use a 5/16" x 5" plate to form the skid plate. The

skid plate will be welded to the 1" tube and then reinforced with structural members from the skid plate to the Fiero chassis.



Triangular tabs are used to weld the skid plate to the heavy 1" bar that has been glassed onto the body.

FIGURE 127. Skid plate - view from under car

See the section on mounting body for how this is tied to the Fiero chassis.

This page intentionally left blank