

We would like to congratulate you on your choice of this wonderful kit. We recognize that you are about to embark on a great adventure. This manual along with the video and blueprints should enable you to complete this project. In the event that you have any questions during the assembly process please feel free to call us to discuss any concerns. We recommend that you read the entire assembly manual prior to beginning the actual assembly to familiarize yourself with the various steps. You may jump from chapter to chapter as you build your car.

---

While this instruction manual is intended to provide guidance in building your Phantom Roadster, you may find new ways to accomplish some of the steps. That is the fun in building your own car. You can be innovative and creative to make it even more unique.

---

### *Tools required*

This is a listing of the types of tools that you will need as you build your kit.

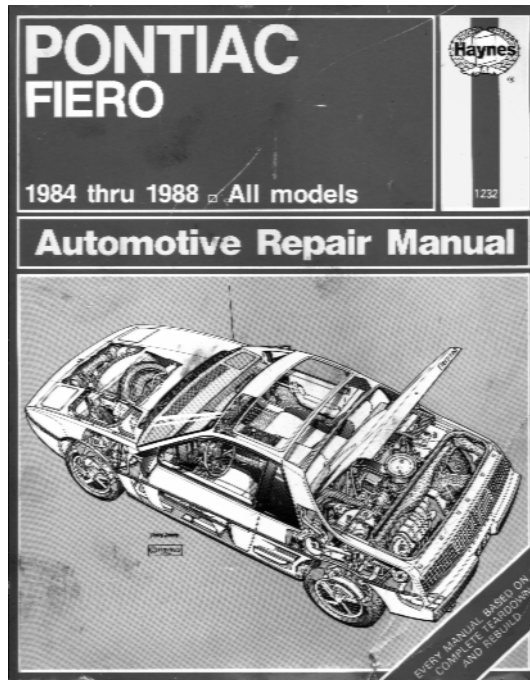
#### **Minimum**

- Socket set - Standard and Metric
- Screwdrivers - phillips and flathead
- Wrenches - Box end and Crescent
- Flaring tool
- Floor Jack
- Jack stands
- Hammer

- Electric drill
- Electric grinder
- Electric metal saw
- Assorted Drill Bits
- C clamps and Spring clamps

### Optional

- Air Compressor
- Welder
- Drill Press



---

### *Additional Reference Material*

We would also recommend that you get a manual dealing with the care and maintenance of the Fiero. One such book is a Haynes manual as shown below. There are other manuals as well that you may want to pick up. The reason to have these books is to answer any questions that may come up in dealing with the

actual mechanical aspects of the car. For example if you are planning on removing the engine. These manuals will be invaluable assisting in these tasks.

These books are available at most autoparts stores.

---

*Skills required*

**Welding**

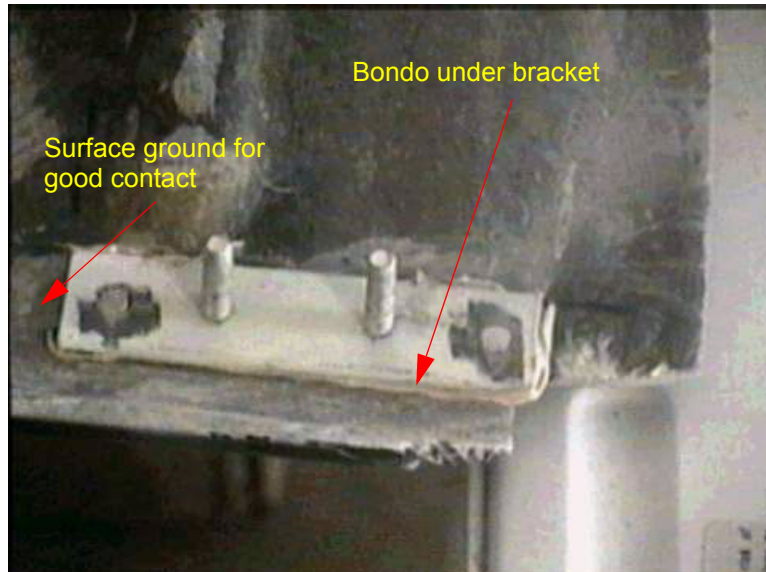
It will be necessary to use a welder in constructing this kit. This will be required for the stretching of the frame as well as when parts have to be fabricated for the car. If you are not familiar with welding, you may wish to hire a professional to do the structural part of the kit or possibly take a course through your community college.

**Body Work**

When fastening metal components like the hinges to the deck lids, the methods that are used are as follows:

1. Grind the surface to which the component will be fastened to remove the waxy coating.
2. Test fit component to make sure there is a good fit.
3. Mix and apply a coating of bondo to the component similar to applying butter to a piece of bread.

4. Apply the component to the surface and if necessary, clamp lightly in place.



5. Let bondo dry thoroughly according to manufactures instructions.
6. Cut a piece of fiberglass matting or cloth to allow an overlap of at least 2" around the component.
7. Mix up enough resin and hardener to saturate the matting or cloth. Take necessary precautions to cover the threads of any bolts to make sure they are not filled with resin.

### Electrical Work

You will need to be able to make electrical connections and splice wires into the existing Fiero wiring harness. Because the body is made of fiberglass and does not conduct electricity, it will be necessary to run ground wires to all connections that are made in the fiberglass.

You will need to have access to an Ohm/Volt meter for checking connections.



